

# THE BETAMAX COMBO

FLOUR TORTILLA MACHINE

## MODEL 20 OVEN SPEC

120 or 240 Volts

3.0 Amps

Cycles/Phase: 60HZ/Single

Natural Gas: 100,000 BTU's

Dimensions vary with conveyor length

Conveyor Lengths: 30", 42", 60"

Conveyor Lengths: 77 cm, 107 cm, 153 cm

Weight: Approx. 830 lbs./377 Kg

Tortilla Production: Up to 900 per hour

Tortilla Diameter: 4" to 12"

\*Tortilla production may vary due to operator experience, diameter and thickness of tortillas.



Plug:  
NEMA 5-20P  
(125V ~)



Receptacle:  
NEMA 5-20R  
(125V ~)



Plug:  
NEMA 6-20P  
(250V ~)



Receptacle:  
NEMA 6-20R  
(250V ~)

## MODEL 12 PRESS SPEC

220 or 240 Volts

23.4 Amps

Cycles/Phase: 60HZ/Single

Dimensions: L26" X W 18" X H25.75"

Dimensions (Metric): 66cm x 46cm x 66cm

Shipping Weight: Approx. 200 lbs.



Plug:  
NEMA 10-50P  
(250V ~)



Receptacle:  
NEMA 10-50R  
(250V ~)



Energy Efficient and Easy to Operate! ●

The Ultimate in Display Cooking! ●

Optional Dough Trolley Loader! ●

A Unique Machine offering Versatility and Consistency! ●



200 Lombrano St · San Antonio, TX 78207 USA

Office: (210) 734-5124 · Fax: (210) 737-3925

Toll Free: 1-800-683-0928

Email: sales@bescomfg.com · Website: www.bescomfg.com

Visit our website to view video www.bescomfg.com



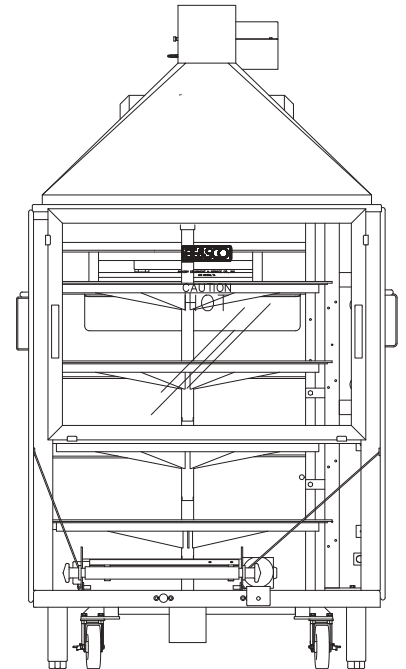
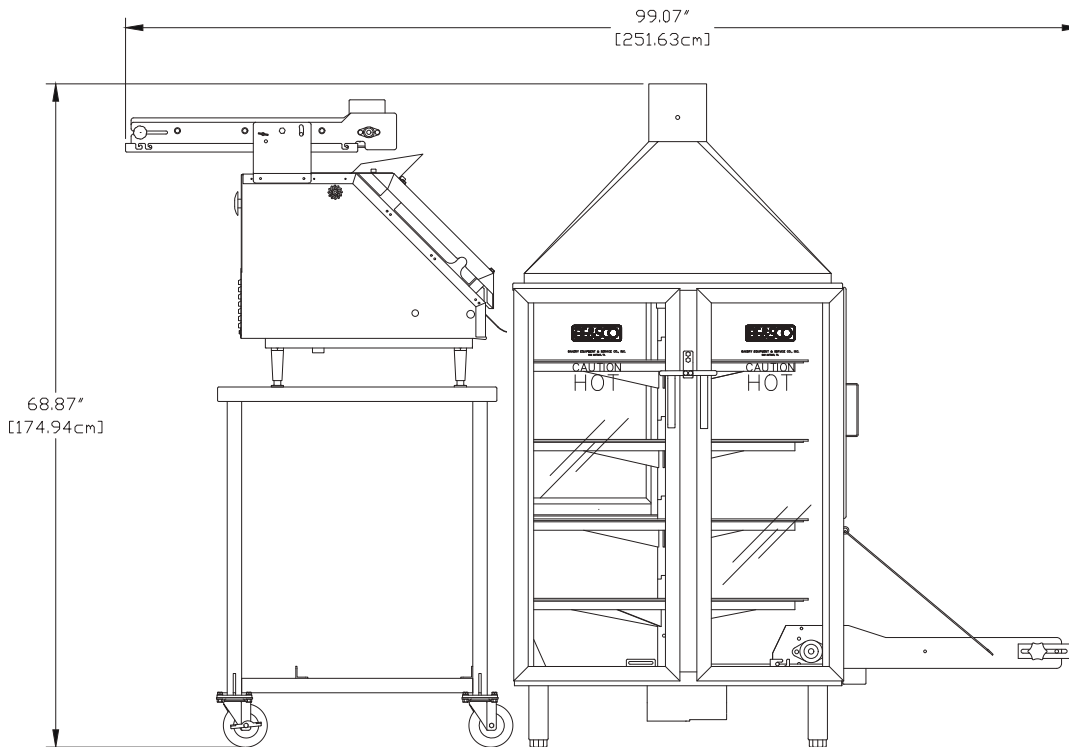
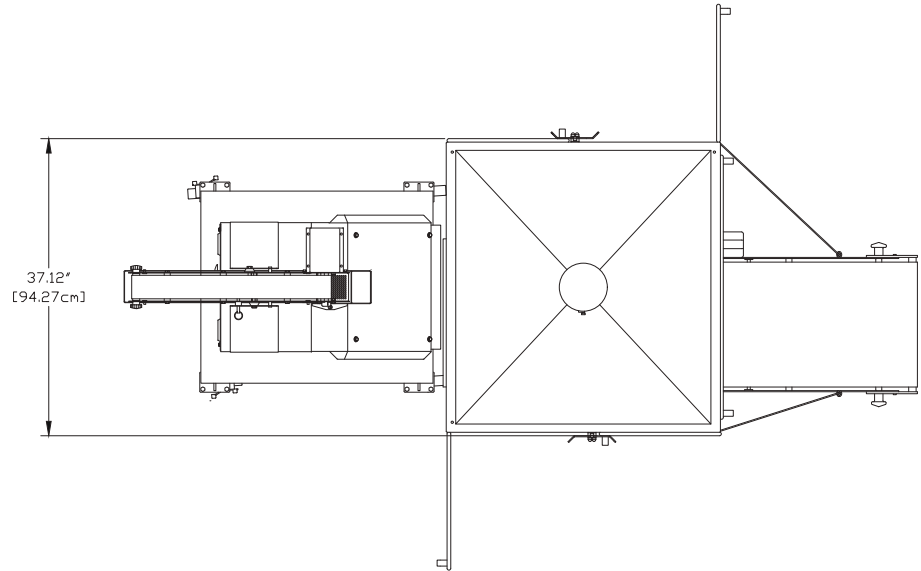
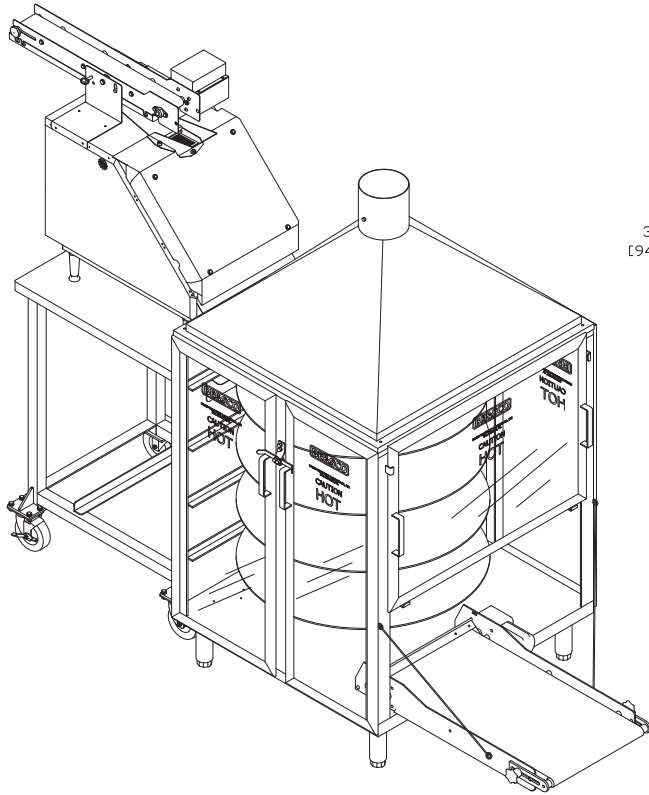
Certifications Applicable to Press and Oven Only

*\*Certifications Not Applicable to Stands*

Revised: 09/02/2020

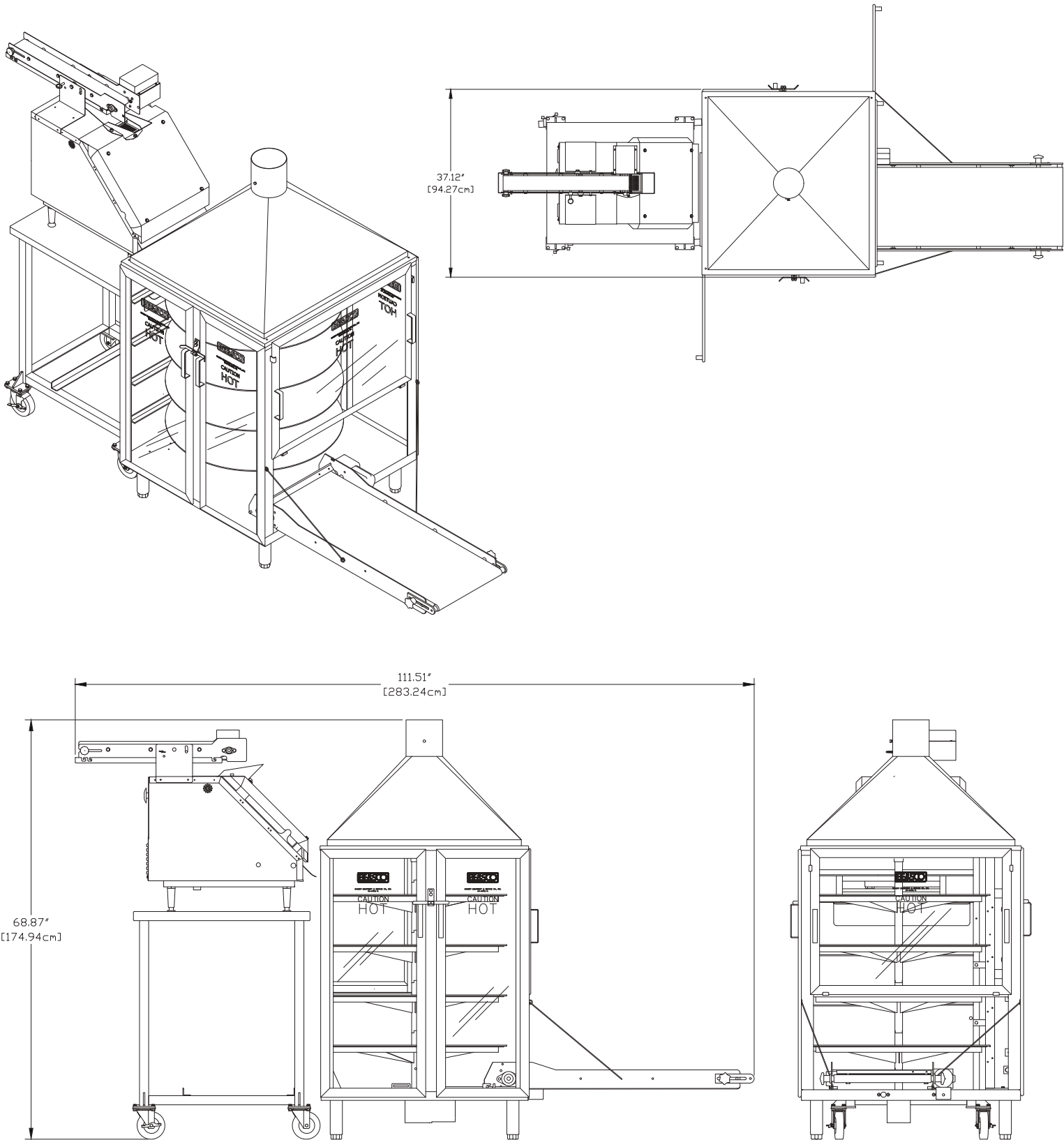
# Betamax Combo, Straight Exit - Model: 20

(Shown with DTL and 30" Exit Conveyor)



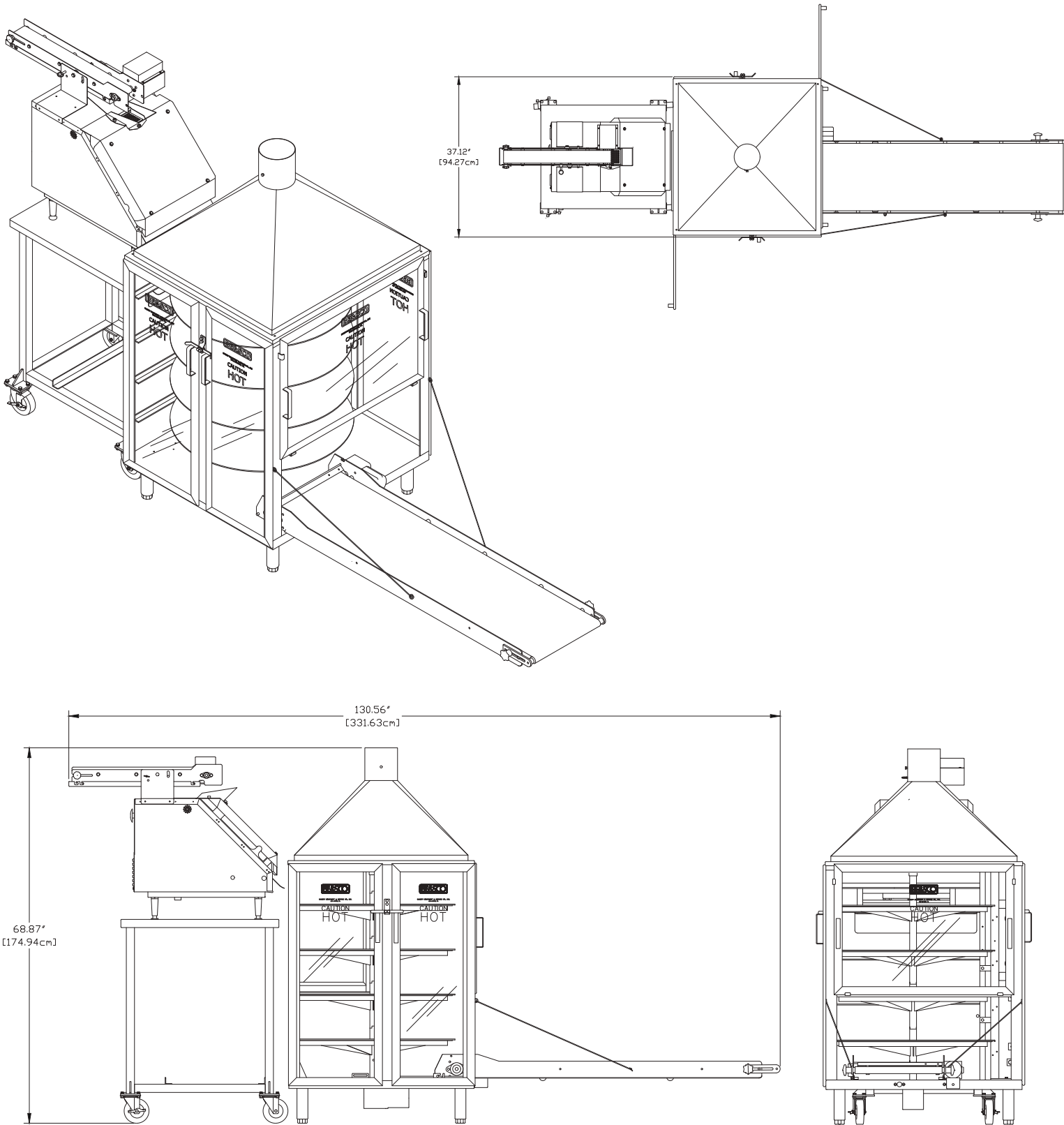
# Betamax Combo, Straight Exit - Model: 20

(Shown with DTL and 42" Exit Conveyor)



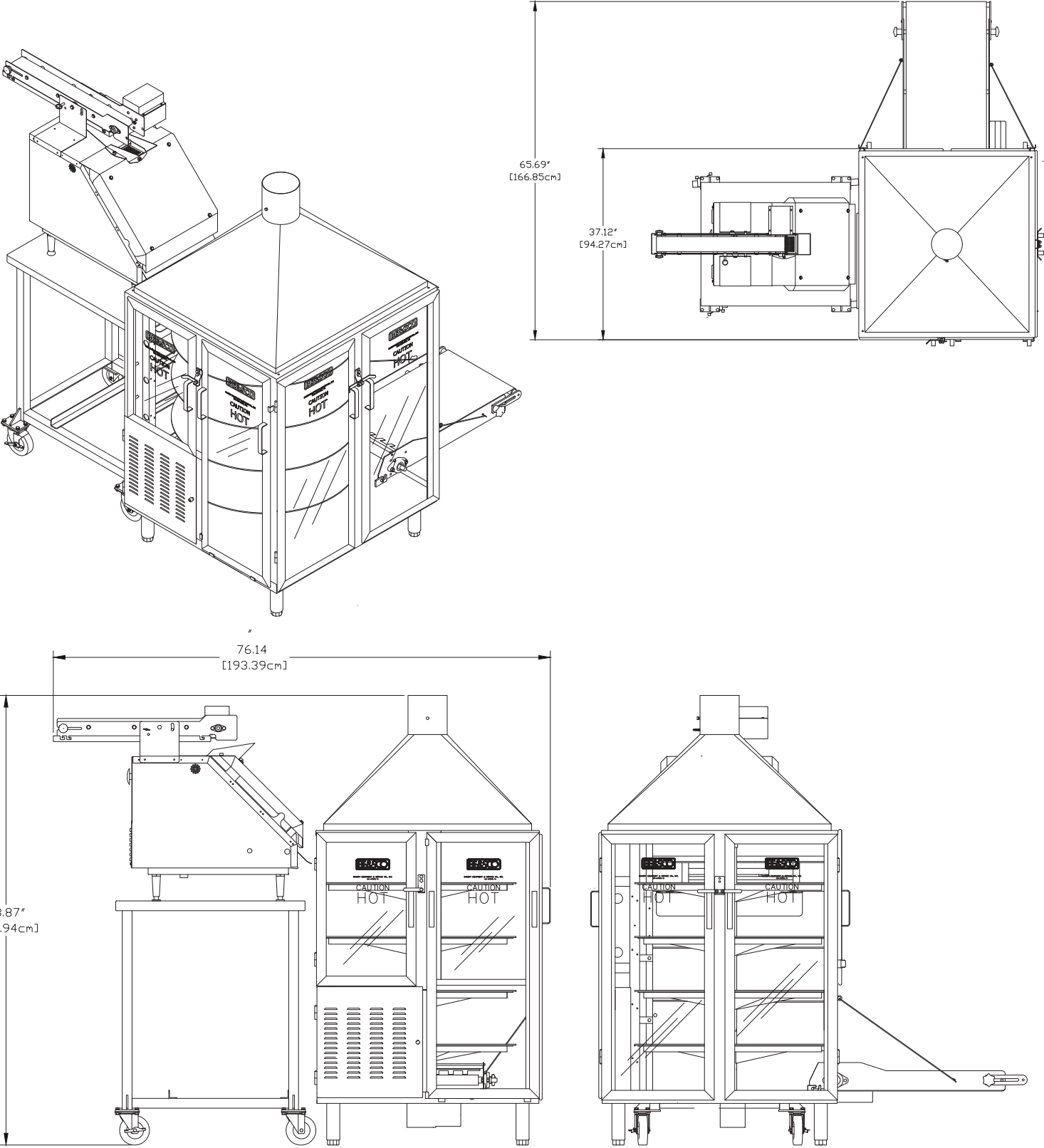
# Betamax Combo, Straight Exit - Model: 20

(Shown with DTL and 60" Exit Conveyor)



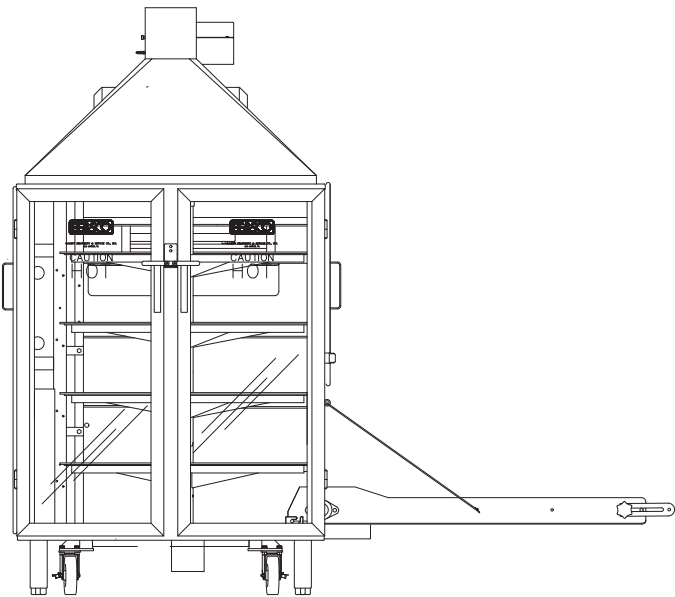
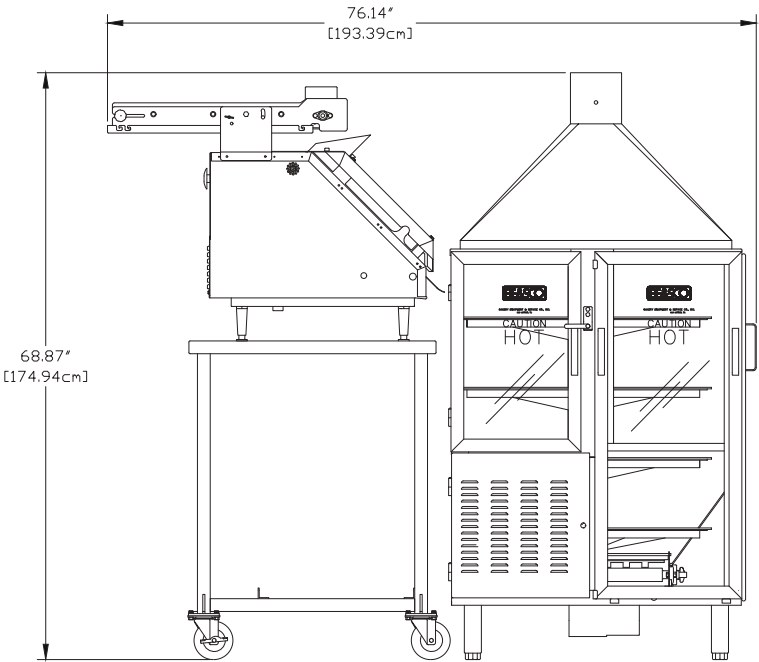
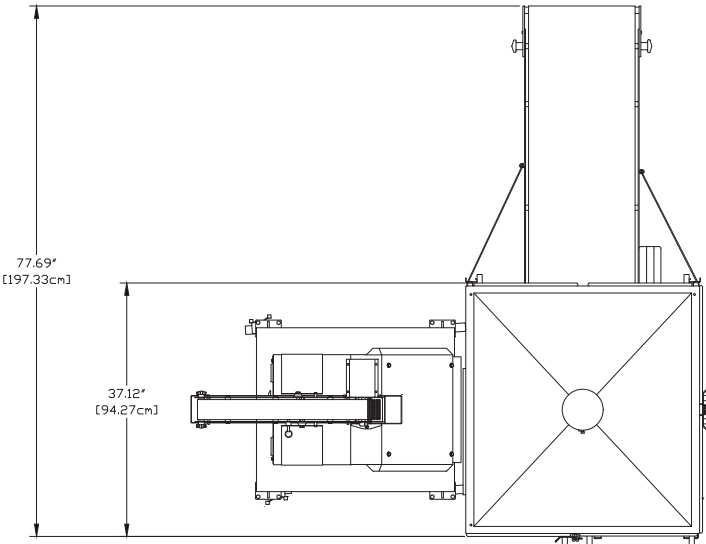
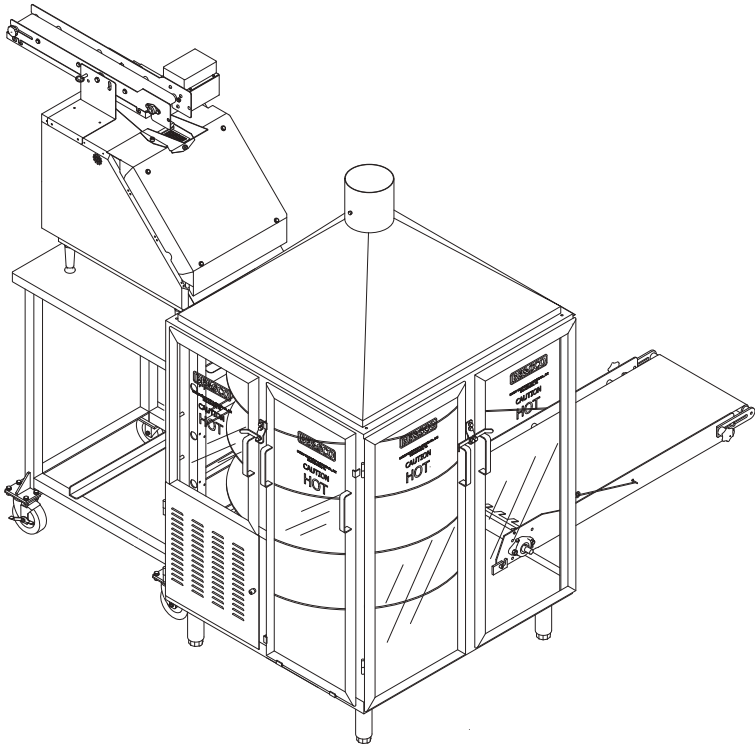
# Betamax Combo, Left Exit - Model: 20L

(Shown with DTL and 30" Exit Conveyor)



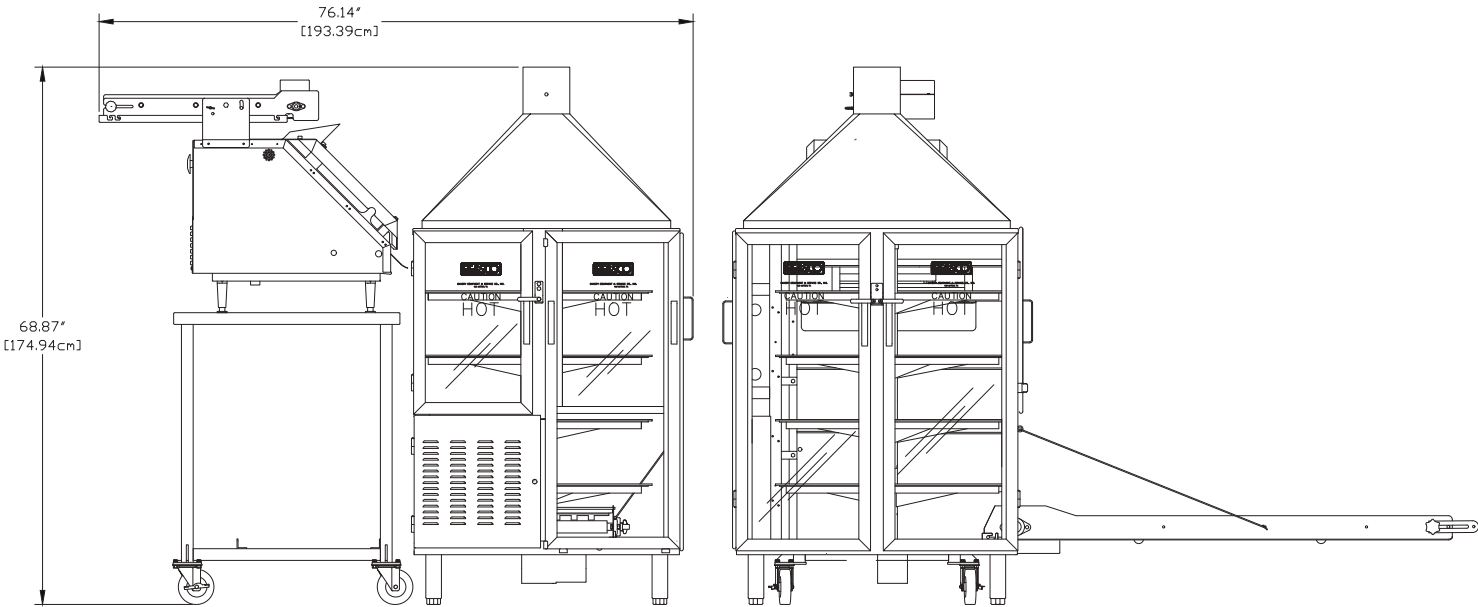
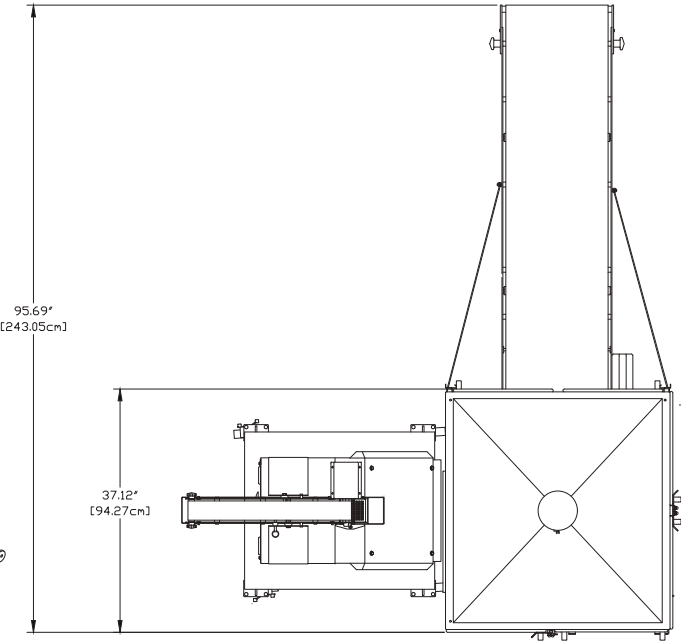
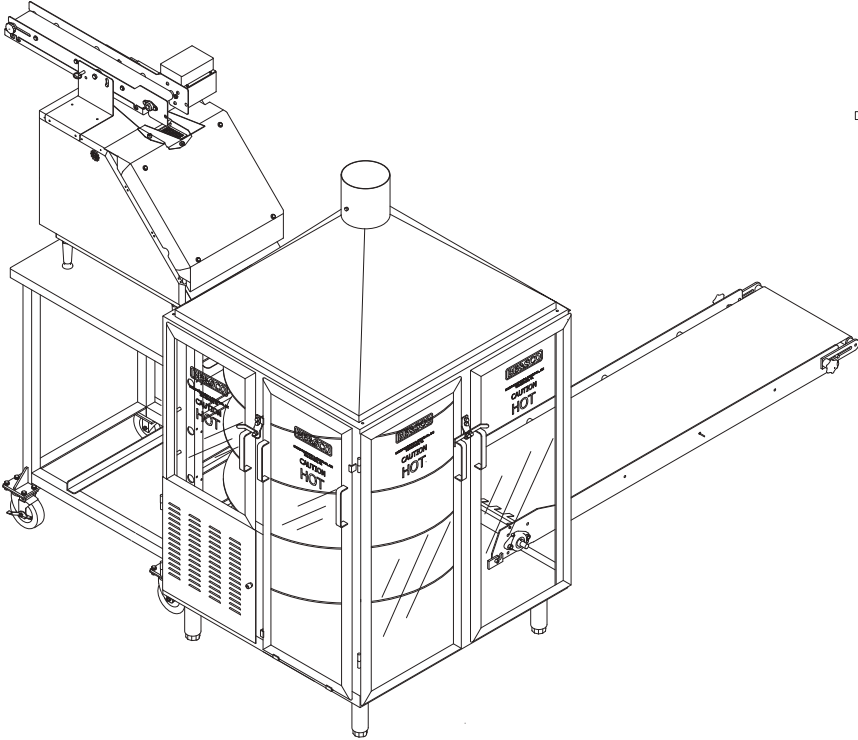
# Betamax Combo, Left Exit - Model: 20L

(Shown with DTL and 42" Exit Conveyor)



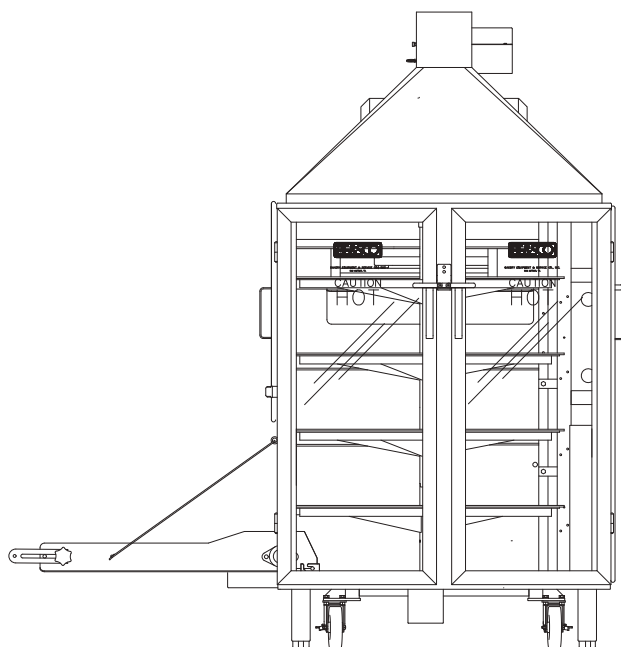
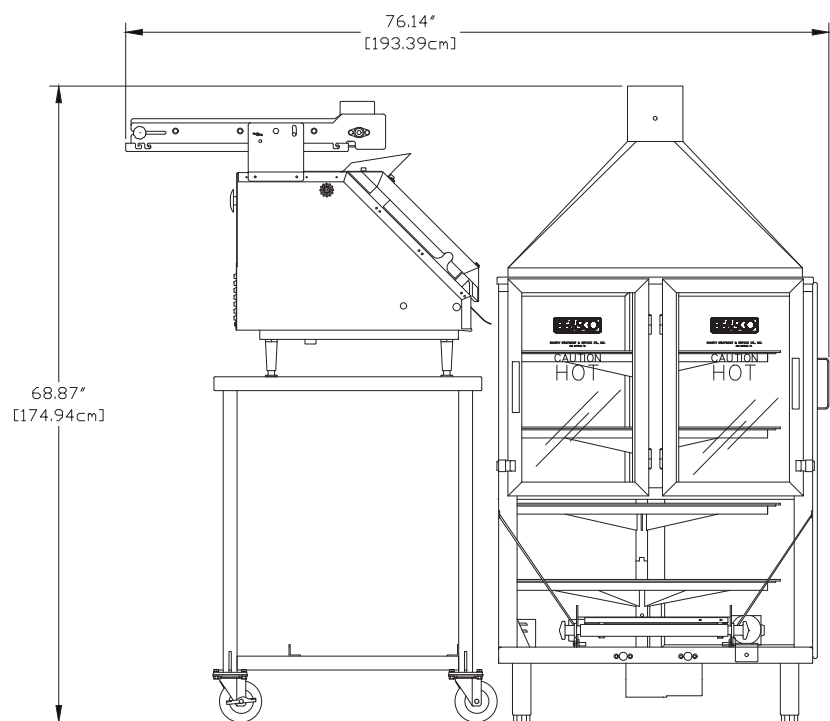
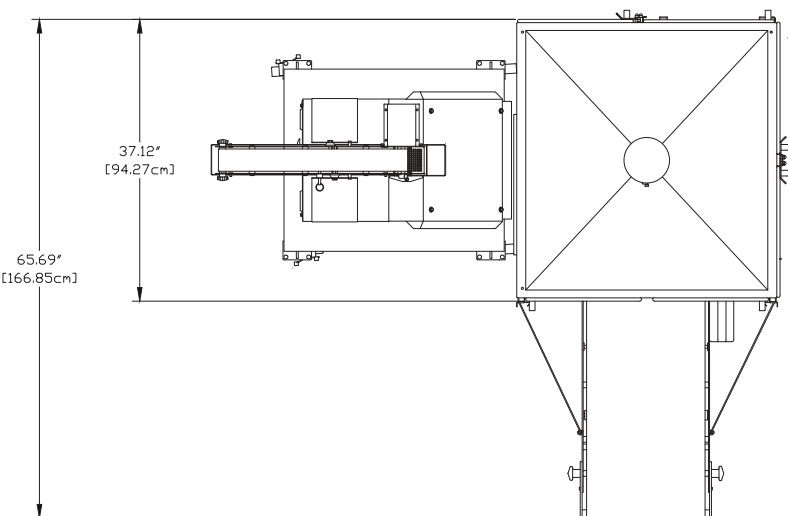
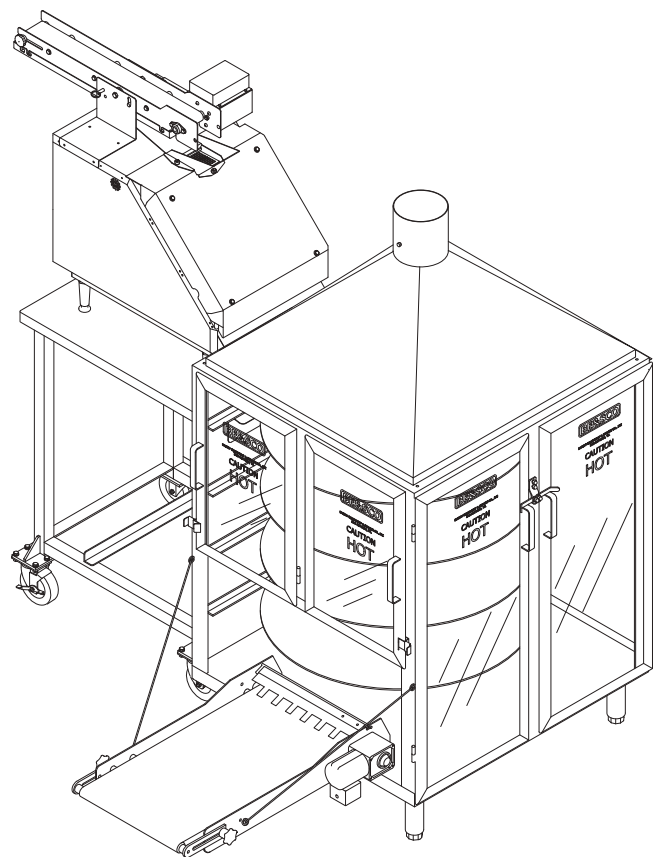
# Betamax Combo, Left Exit - Model: 20L

(Shown with DTL and 60" Exit Conveyor)



# Betamax Combo, Right Exit - Model: 20R

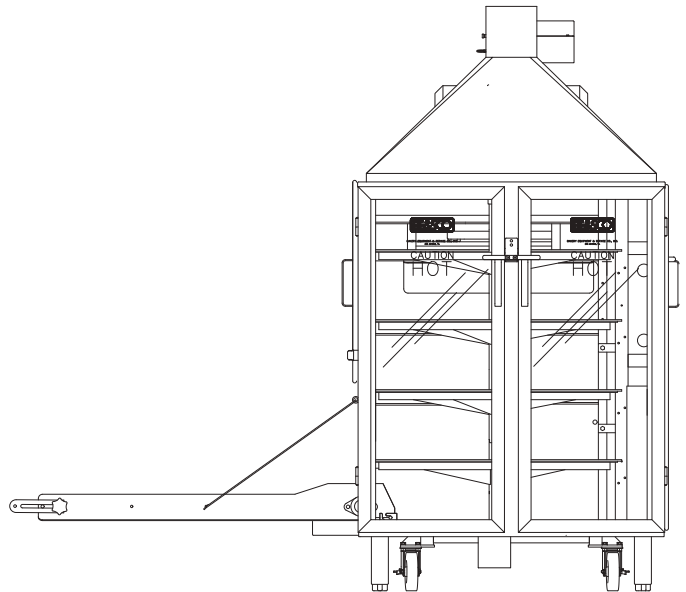
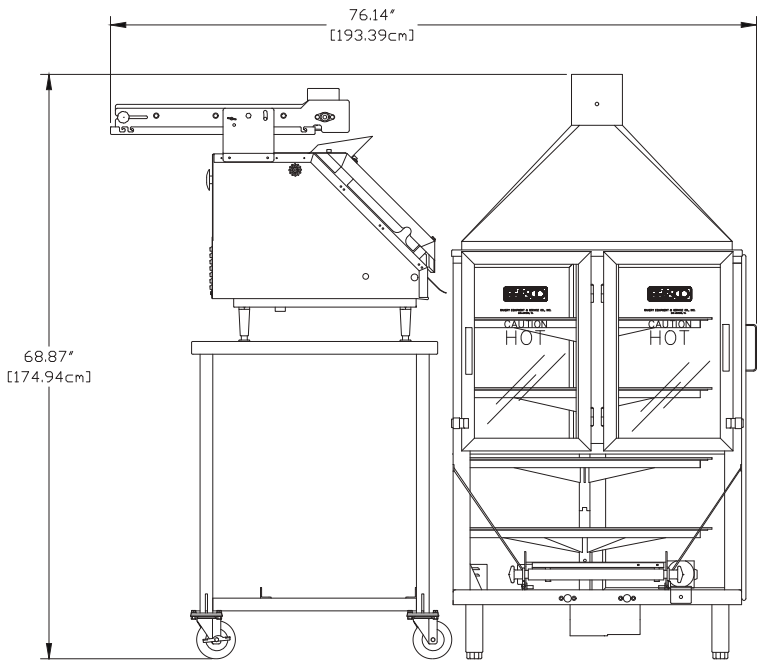
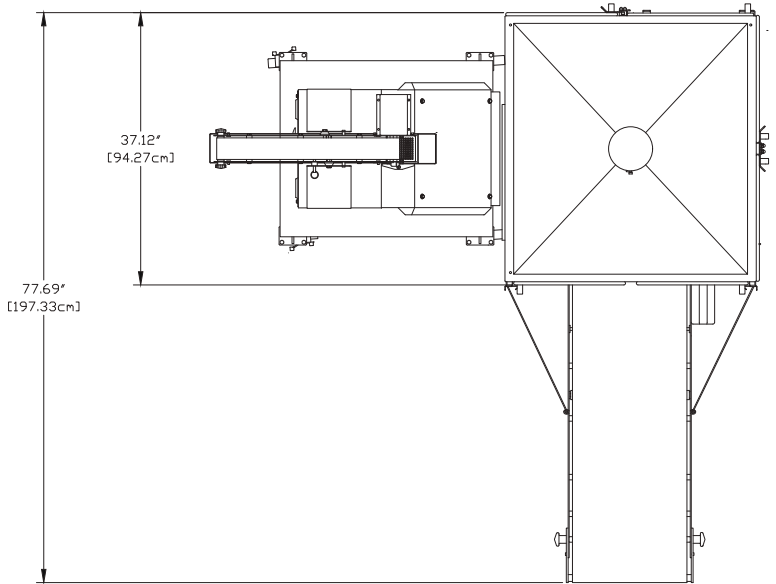
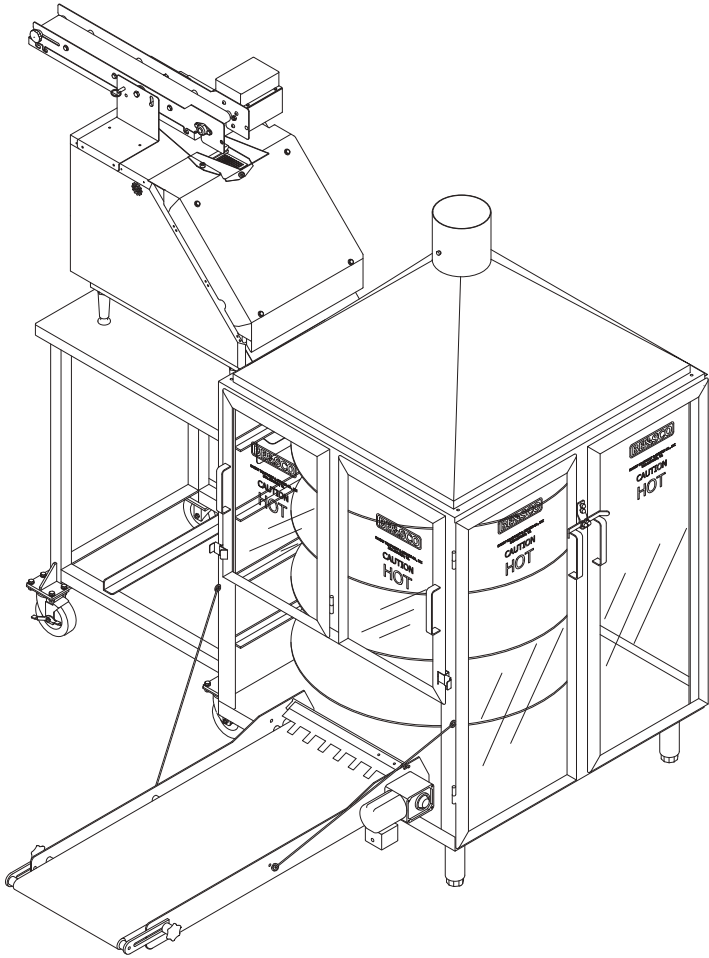
(Shown with DTL and 30" Exit Conveyor)





# Betamax Combo, Right Exit - Model: 20R

(Shown with DTL and 42" Exit Conveyor)



# Betamax Combo, Right Exit - Model: 20R

(Shown with DTL and 60" Exit Conveyor)

